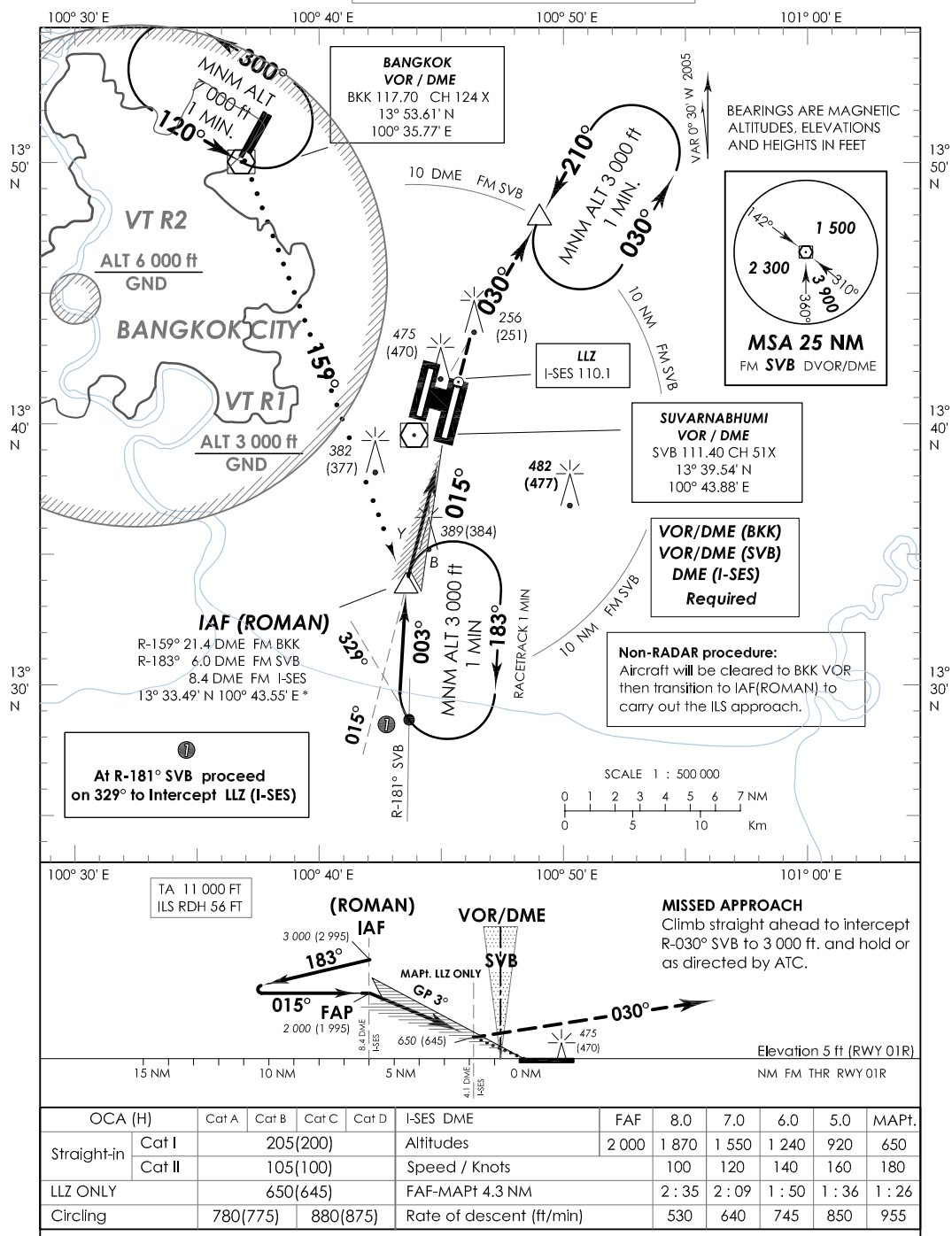


INSTRUMENT
APPROACH
CHART - ICAO

AERODROME ELEV 5 FT
HEIGHT RELATED TO
THR RWY 01R - ELEV 5 FT

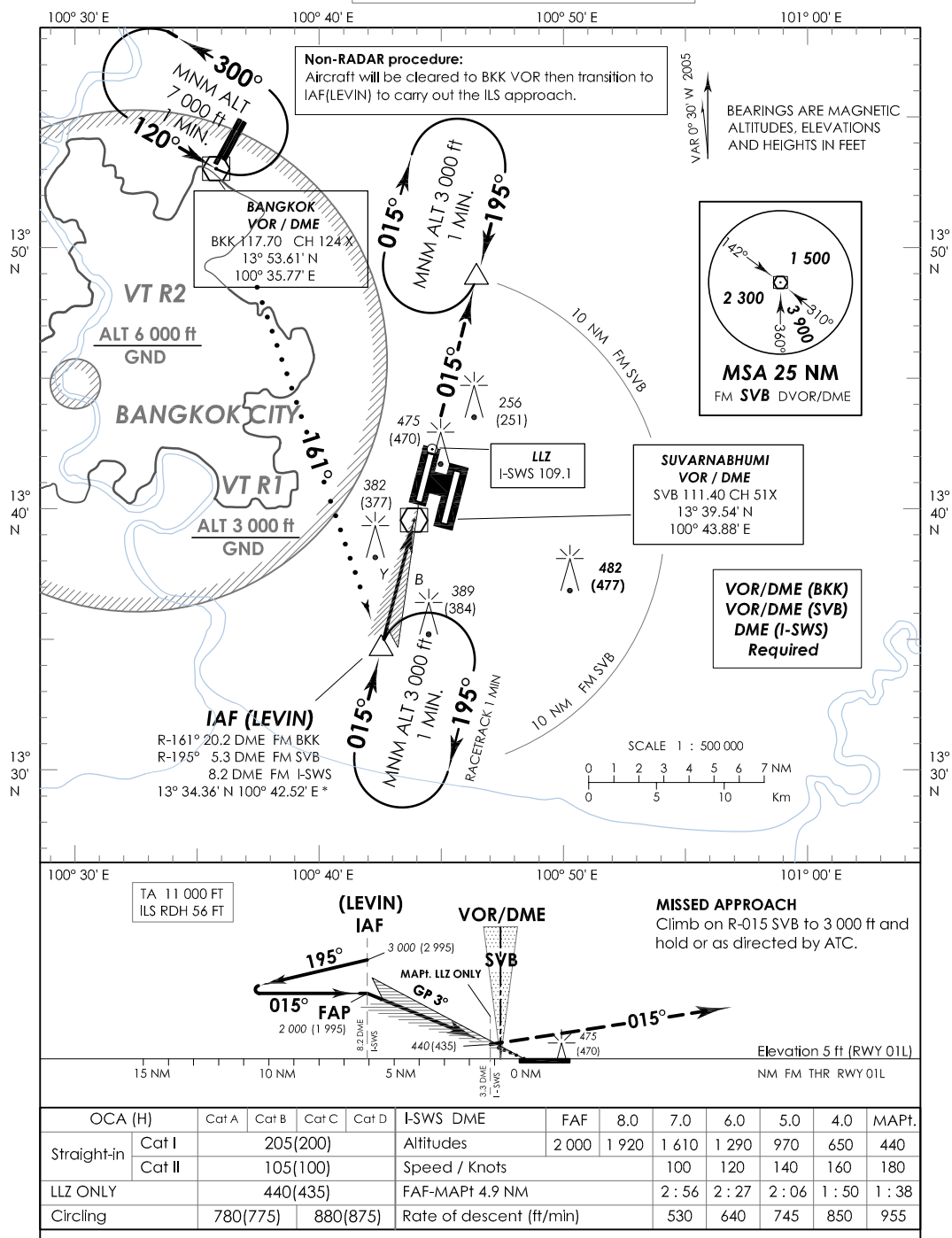
BANGKOK / Suvarnabhumi Intl
ILS or LLZ RWY 01R
CAT II

APP : 122.35, 257.6, 124.35, 262.5, 125.2, 259.6
ARR : 124.7, TWR : 118.2, 119.0, ATIS : 127.8, 278.6



Department of Civil Aviation

INSTRUMENT APPROACH CHART - ICAO **AERODROME ELEV 5 FT** **BANGKOK / Suvarnabhumi Intl**
 HEIGHT RELATED TO THR RWY 01L - ELEV 5 FT ILS or LLZ RWY 01L
 APP : 122.35, 257.6, 124.35, 262.5, 125.2, 259.6
 ARR : 124.7, TWR : 118.2, 119.0, ATIS : 127.8, 278.6
 CAT II



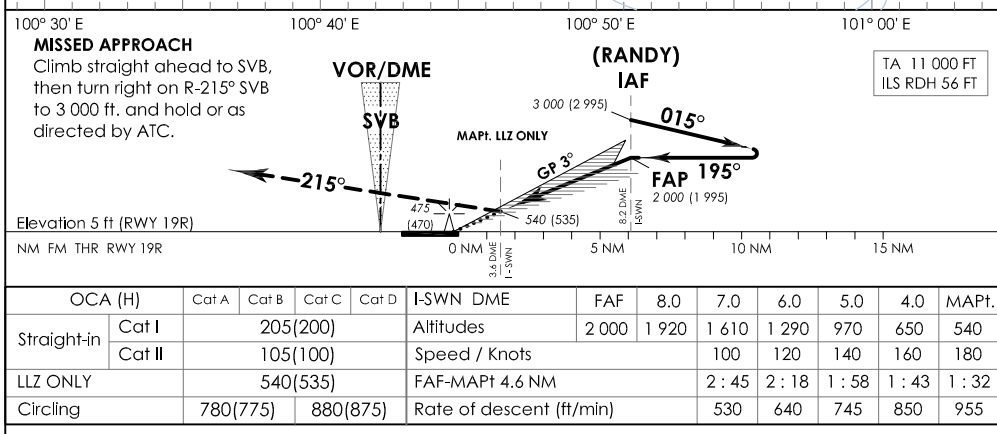
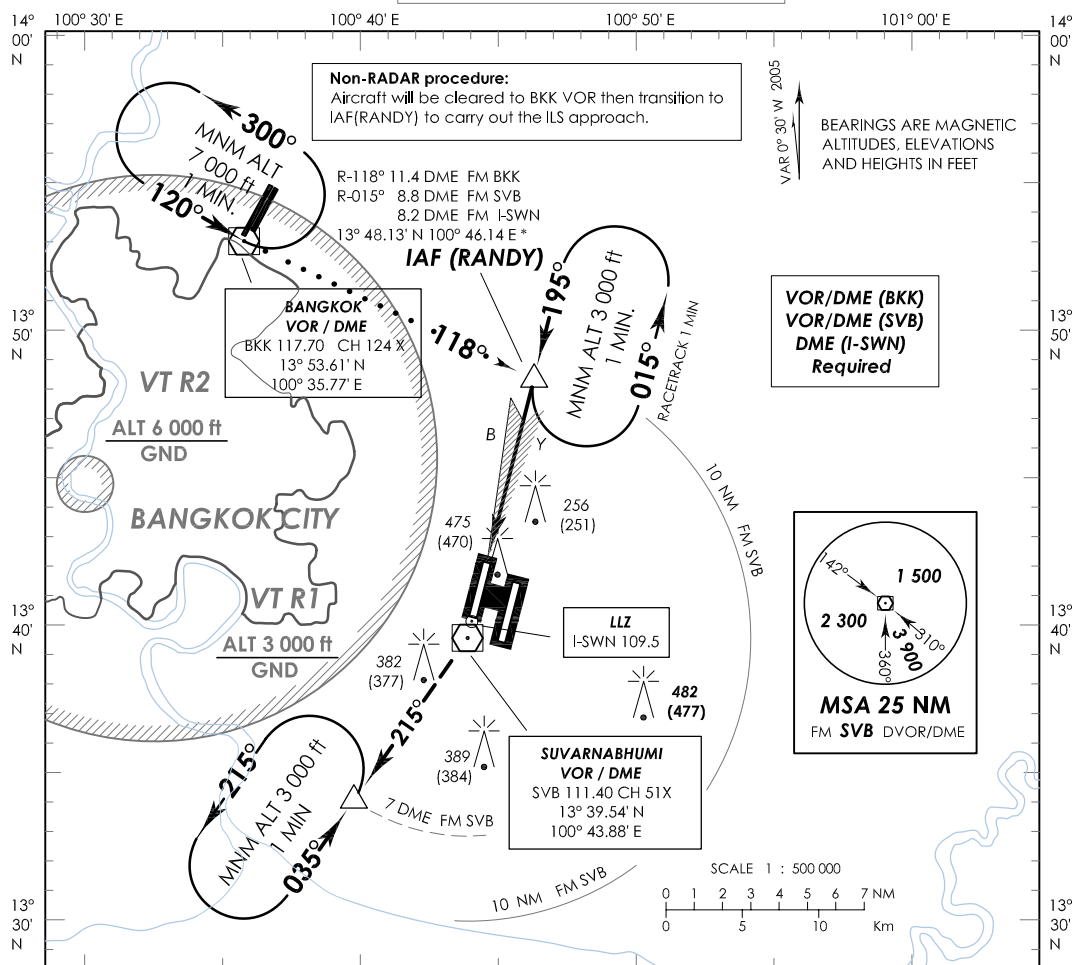
Department of Civil Aviation

INSTRUMENT
APPROACH
CHART - ICAO

AERODROME ELEV 5 FT
HEIGHT RELATED TO
THR RWY 19R - ELEV 5 FT

APP : 122.35, 257.6, 124.35, 262.5, 125.2, 259.6
ARR : 124.7, TWR : 118.2, 119.0, ATIS : 127.8, 278.6

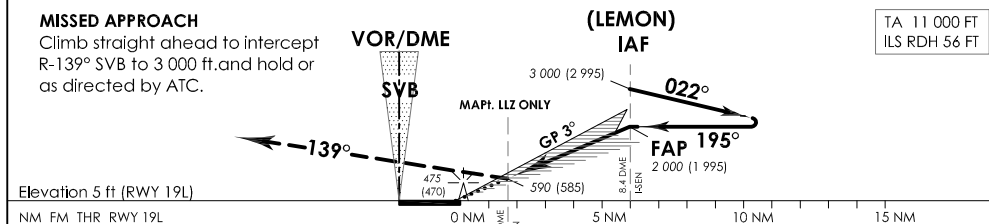
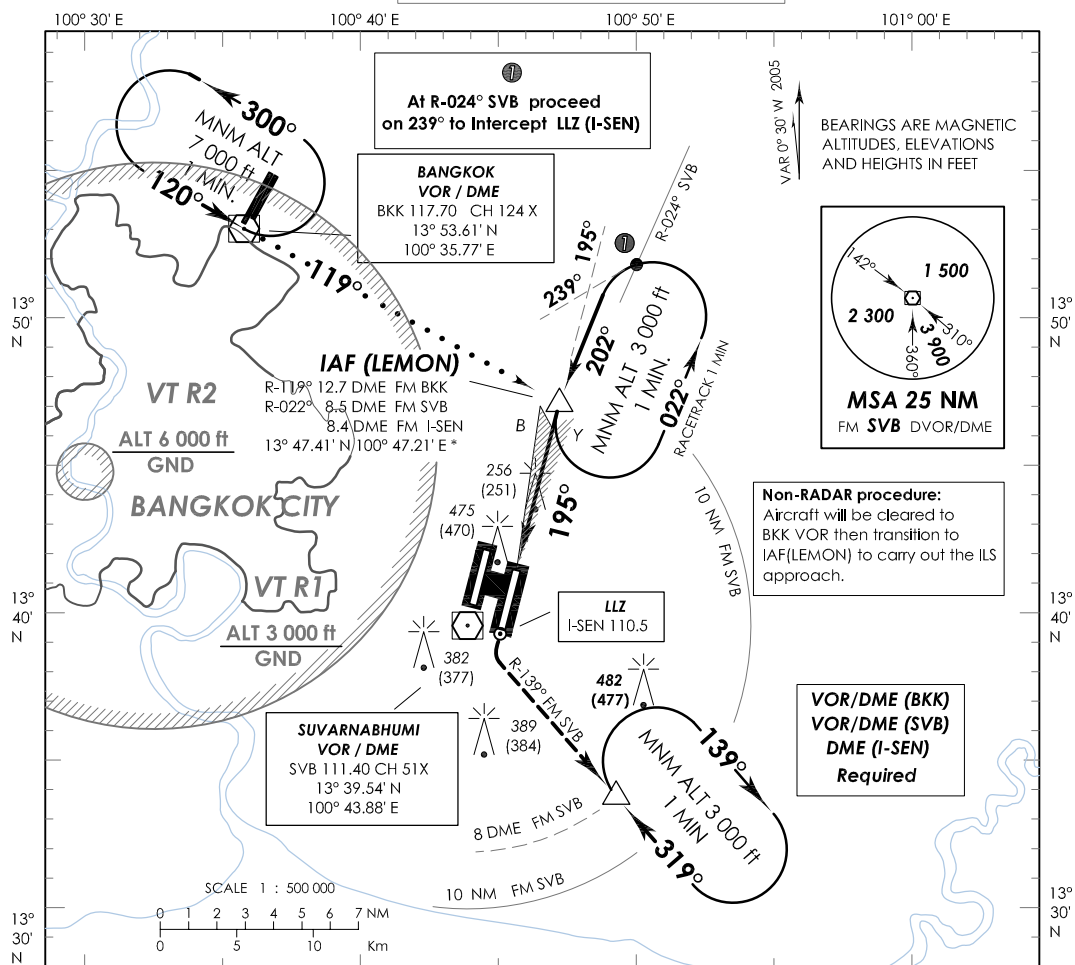
BANGKOK / Suvarnabhumi Intl
ILS or LLZ RWY 19R
CAT II



OCA (H)	Cat A	Cat B	Cat C	Cat D	I-SWN DME	FAF	8.0	7.0	6.0	5.0	4.0	MAPt.
Straight-in	Cat I	205(200)			Altitudes	2 000	1 920	1 610	1 290	970	650	540
	Cat II	105(100)			Speed / Knots			100	120	140	160	180
LLZ ONLY		540(535)			FAF-MAPt 4.6 NM			2 : 45	2 : 18	1 : 58	1 : 43	1 : 32
Circling		780(775)	880(875)		Rate of descent (ft/min)			530	640	745	850	955

Department of Civil Aviation

INSTRUMENT APPROACH CHART - ICAO **AERODROME ELEV 5 FT** **BANGKOK / Suvarnabhumi Intl**
 HEIGHT RELATED TO THR RWY 19L - ELEV 5 FT ILS or LLZ RWY 19L
 APP : 122.35, 257.6, 124.35, 262.5, 125.2, 259.6
 ARR : 124.7, TWR : 118.2, 119.0, ATIS : 127.8, 278.6
 CAT II



OCA (H)	Cat A	Cat B	Cat C	Cat D	I-SEN DME	FAF	8.0	7.0	6.0	5.0	MAPt.
Straight-in	Cat I	205(200)			Altitudes	2 000	1 870	1 550	1 240	920	590
	Cat II	105(100)			Speed / Knots	100	120	140	160	180	
LLZ ONLY		590(585)			FAF-MAPt 4.4 NM	2 : 38	2 : 12	1 : 53	1 : 39	1 : 28	
Circling		780(775)	880(875)		Rate of descent (ft/min)	530	640	745	850	955	

Department of Civil Aviation